



SUMMARY OF CARBON REDUCE CERTIFICATION ⁱ

FOR Locala Community Partnerships C.I.C



Summary for 01 April 2023 to 31 March 2024

CARBON REDUCE ORGANISATION CERTIFIED: LOCALA COMMUNITY PARTNERSHIPS C.I.C

Carbon Reduce certified means committing to ongoing reductions while achieving annual measurement for at least the Toitū mandatoryⁱⁱ emissions.



Measured emissions to ISO
14064-1:2018 and Programme
requirements



Managing and reducing against
Programme requirements

This report provides a summary of the annual greenhouse gas (GHG) emissions inventory and management report for Locala Community Partnerships C.I.C as part of the annual work to achieve Carbon Reduce certification. Additional details of the annual achievements, commitments, and verification are available on request from Locala Community Partnerships C.I.C.

The purpose of this report is to comprehensively outline and assess the organisation's greenhouse gas (GHG) policies, strategies, and programs within the broader framework of applicable GHG initiatives. The objectives of the report are as follows:

1. Policy Evaluation:

- Evaluate and articulate the effectiveness of Locala's existing GHG policies. This includes an examination of the policies' alignment with industry best practices, regulatory requirements, and international standards.

2. Strategy Assessment:

- Assess the implementation and impact of the Locala's GHG reduction strategies. This involves analysing the efficacy of current strategies in mitigating emissions, improving energy efficiency, and promoting sustainable practices.

3. Programmatic Analysis:

- Review and analyse the various GHG programs implemented by the Locala. This includes initiatives related to carbon footprint measurement, emissions reduction projects, and any partnerships or collaborations aimed at addressing climate change concerns.

4. Contextualisation within GHG Initiatives:

- Place Locala's GHG efforts within the context of broader industry and global GHG reduction initiatives. Evaluate how the organisation's strategies align with and contribute to overarching sustainability goals and international commitments, such as those outlined in global climate agreements.

5. Performance Metrics:

- Establish and analyse key performance metrics related to GHG emissions. This involves quantifying the Locala's carbon footprint, tracking emission reduction progress, and assessing the achievement of predetermined sustainability targets.

6. Identification of Opportunities and Challenges:

- Identify opportunities for improvement and expansion of GHG initiatives. Simultaneously, address challenges faced by the organisation in achieving its GHG reduction goals, providing insights into areas that may require additional focus or resources.

7. Compliance with Applicable GHG Programmes:

- Ensure that the organisation's GHG policies, strategies, and programs align with and adhere to relevant GHG reduction programs, standards, and reporting requirements. This includes compliance with regional, national, and international protocols.

By addressing these objectives, the report aims to provide a comprehensive overview of Locala's commitment to managing and reducing its greenhouse gas emissions, contributing to a sustainable and environmentally responsible business model.

ACHIEVEMENTS

These achievements have been verified in line with ISO 14064-3:2019 and Carbon Reduce Programme Technical Requirements for the 01 April 2023 to 31 March 2024 measurement period.

EMISSIONS MEASUREMENT

Locala Community Partnerships C.I.C's greenhouse gas emissions for this year (01 April 2023 to 31 March 2024) were 1,030.69 tCO₂e. Locala Community Partnerships C.I.C has measured the emissions resulting from its operational activities, purchased energy, and selected impacts from its value chain activities, including business travel, freight, and waste sent to landfill. The annual inventory is detailed in the following table. Emissions and reductions are reported using a location-based methodology.ⁱⁱⁱ

Category (ISO 14064-1:2018)	Scopes (GHG Protocol)	GHG emissions (tCO ₂ e)
		Current Year 2023/2024
Category 1: Direct emissions (tCO ₂ e)	Scope 1	468.20
Category 2: Indirect emissions from imported energy (location-based method*) (tCO ₂ e)	Scope 2	205.88
Category 3: Indirect emissions from transportation (tCO ₂ e)	Scope 3	336.22
Category 4: Indirect emissions from products used by organisation (tCO ₂ e)		20.39
Category 5: Indirect emissions associated with the use of products from the organisation (tCO ₂ e)		0.00
Category 6: Indirect emissions from other sources (tCO ₂ e)		0.00
Total gross emissions* (tCO₂e)		1,030.69
Category 1 direct removals (tCO ₂ e)		0.00
Total net emissions (tCO₂e)		1,030.69

*Gross and net emissions are reported using a location-based methodology. Contact Locala Community Partnerships C.I.C for full details.

The operational GHG emission sources included in this inventory are shown in Figure 1 below.

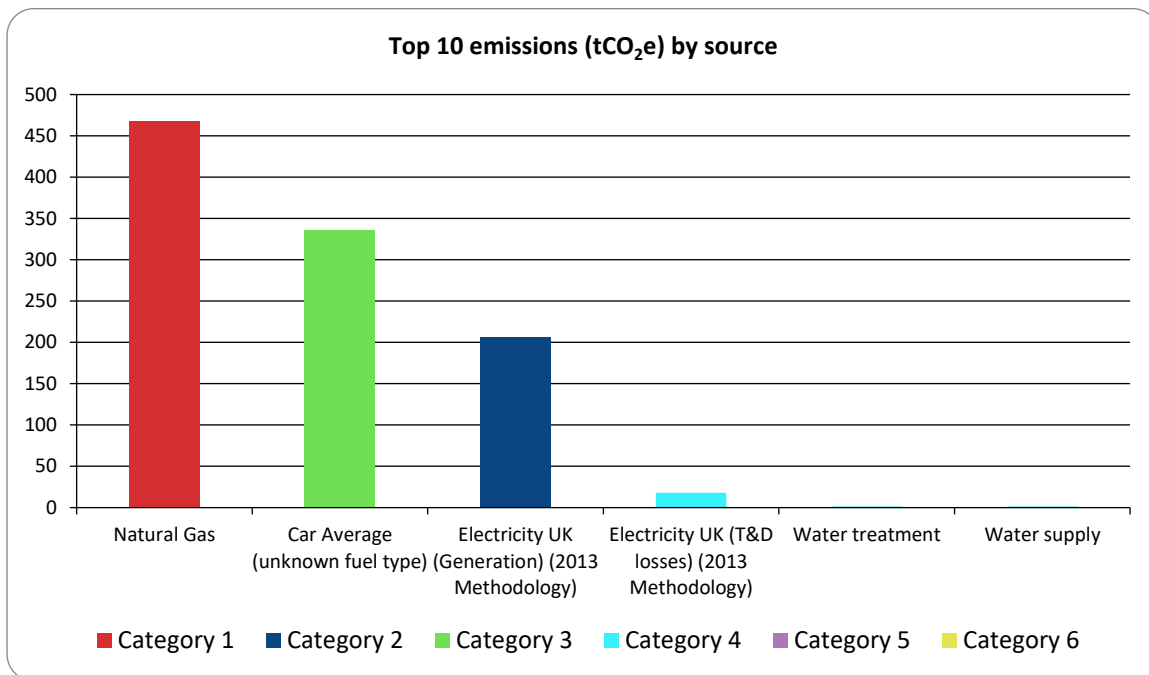


Figure 1: Top 10 GHG emissions (tonnes CO₂e) by source

SCOPE OF MEASURED INVENTORY

CONSOLIDATION APPROACH

An operational control consolidation approach was used to account for emissions. Organisational boundaries were set with reference to the methodology described in the GHG Protocol and ISO 14064-1:2018 standards. ^{iv}

BOUNDARIES

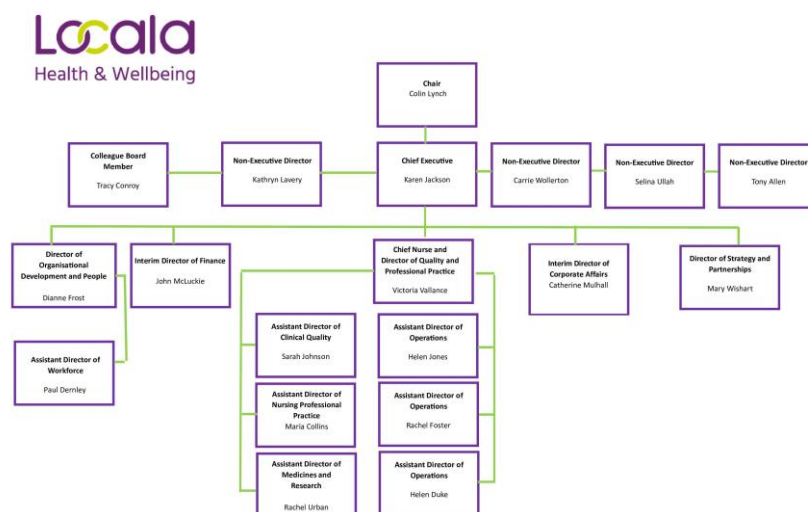


Figure 2: Organisational structure showing business units included and excluded

Locala's non-demised estate/non-leased estate have not been included in this report due to the lack of capacity for inclusion.. Excluded emissions do not exceed 5% of the total footprint within the organisation boundary stated.

Excluded Business Units:

1. Almondbury Children's Centre
2. Birkenshaw Health Centre
3. Birstall & Birkenshaw Children's Centre
4. Brighouse Health Centre
5. Brookroyd Surgery
6. Calderdale Royal Hospital
7. Calderdale- Ash green CC
8. Calderdale- Boothtown CC
9. Calderdale- Creations CC
10. Calderdale- Elland CC
11. Calderdale- Grass roots Family Centre Sowerby Bridge
12. Calderdale- Illingworth CC
13. Calderdale- Innovations CC
14. Calderdale- Jubilee CC
15. Calderdale- Kevin Pearce CC
16. Calderdale- Little Starts CC
17. Calderdale- Northowarm Clinic
18. Calderdale- Siddall Children's Centre CC
19. Calderdale- The Space
20. Calderdale- Todmorden Children's centre
21. Calderdale- Vally Medical Centre
22. Calderdale- Wellholme CC
23. Chestnut Centre
24. Dearne Valley health Centre
25. Dewsbury & District Hospital

26. Dewsbury Moor & Scout Hill Centre
27. Empire House
28. Greenhead College
29. Huddersfield Royal Infirmary
30. Ings Grove House
31. Kirkburton Health Centre
32. Marsden Health Centre
33. Moldgreen United Reformed Church
34. Moorlands Grange Care Centre
35. Newsome Surgery
36. Northorpe Hall
37. Oakmoor Suite
38. Rawthrope & Dalton Library
39. Shepley Health Centre
40. Slaithwaite Health Centre
41. Slaithwaite Town Hall
42. SPOC
43. The Chestnut Centre
44. The Zone
45. Todmorden College
46. Westmoor Ings Grove House

COMMITMENTS

Reduction targets

Locala Community Partnerships C.I.C is committed to managing and reducing its emissions. Locala Community Partnerships C.I.C's commitments, including GHG emissions reduction targets and plans, have been reviewed and are in line with Toitū Carbon Reduce programme requirements.

Locala Community Partnership, like other healthcare providers, plays a crucial role in contributing to the NHS's overall sustainability goals. Aligning with the NHS's emissions reduction targets is vital for several reasons, particularly in the context of winning contracts and continuing to offer services:

- Alignment with NHS Goals: By adhering to the NHS’s emissions reduction targets, Locala Community Partnership demonstrates its commitment to the broader goals of the healthcare system. This alignment is increasingly important as sustainability becomes a key criterion in the evaluation of service providers.
- Competitive Advantage: Providers prioritising sustainability are often viewed favourably in competitive tender processes. Demonstrating a proactive approach to reducing carbon emissions can give Locala a competitive edge over other providers that may not be as committed to these goals.
- Contractual Requirements: The NHS and other commissioning bodies are likely to include sustainability criteria in their contracts. Meeting or exceeding these criteria can be essential for securing and maintaining contracts.
- Reputation and Trust: Commitment to sustainability enhances the reputation of Locala Community Partnership among patients, staff, and the wider community. This can build trust and support, which is crucial for long-term success and community engagement.
- Cost Savings: Many measures to reduce carbon emissions, such as improving energy efficiency and reducing waste, can also lead to cost savings. These savings can be reinvested into patient care and service improvements, making Locala a more efficient and effective provider.
- Risk Management: Proactively addressing environmental sustainability helps mitigate regulatory changes, supply chain disruptions, and reputational damage risks. This forward-thinking approach can position Locala as a resilient and reliable partner.
- Health Benefits: Reducing emissions has direct health benefits, such as improving air quality and reducing pollution-related illnesses. Locala directly supports its mission of improving community health outcomes by contributing to a healthier environment.
- Innovation and Leadership: Embracing sustainability can drive innovation in service delivery and operational practices. Locala can position itself as a leader in sustainable healthcare, attracting partnerships and opportunities for growth.

Looking ahead, Locala Community Partnerships C.I.C is currently focused on the following projects.

Target name	Baseline period	Target date	Type of target (intensity or absolute)	Categories covered	Target	Responsibility	Rationale
Reduce Grey Fleet Emissions	2023-2024	2027	Intensity	Cat 3	10% reduction	Charlie Wright, Mayar Hamed	National Guidance of the take over electrical vehicles
Reduce Building Energy Use - Grid Energy	2023-2024	2032	Intensity	Cat 2	10% reduction	Charlie Wright, Mayar Hamed	Minimising reliance on grid energy, Locala can contribute to environmental goals, such as achieving net zero targets, and improve energy efficiency, which benefits both the organization and the broader community.

Target name	Baseline period	Target date	Type of target (intensity or absolute)	Categories covered	Target	Responsibility	Rationale
Reduce Building Energy Use - Gas	2023-2024	2032	Intensity	Cat 1	100% reduction	Charlie Wright, Mayar Hamed	Reducing reliance on energy gas use, Locala can contribute to environmental goals, such as achieving net zero targets, and improve energy efficiency, which benefits both the organization and the broader community.
Reduce waste to landfill emissions	2023-2024	2032	Intensity	Cat 4	100% reduction	Charlie Wright, Mayar Hamed	The NHS has pledged to achieve reduction in waste to landfill emissions, and Locala has committed to following this initiative.
Reduce carbon emissions by 25%	2020	2025	Intensity	Cat 1,2	25% reduction	Charlie Wright, Mayar Hamed	Locala internal target following NHS Guidance
Reduce carbon emissions by 80%	2020	2032	Intensity	Cat1,2	80%	Charlie Wright, Mayar Hamed	Locala is contracted by the NHS to provide healthcare services, with 75% of Locala's income derived from the NHS. Consequently, aligning with the NHS net zero targets is essential for Locala.
Achieve Net-Zero	2020	2038	Intensity	Cat 1,2&3	100%	Charlie Wright, Mayar Hamed	Kirklees Council net zero target is 2038 as key customer of Locala we have aligned our objectives accordingly.

CERTIFICATE DETAILS

Certification status:	Carbon Reduce certified organisation
Certificate number:	2024253J, Year 1 of 3 year certificate period
Valid until:	16 August 2027
Measurement period:	01 April 2023 to 31 March 2024
Base year:	01 April 2023 to 31 March 2024
Audited by:	Achilles Assessment Services (UK)
Level of assurance:	Reasonable

ⁱ © Enviro-Mark Solutions Limited 2020.

Disclaimer: This Certification Summary Statement is a summary of the information (validated and verified for relevant components of the certification) considered for certification and the certification decision. It should not be taken to represent the full submission for certification. Whilst every effort has been made to ensure that the information in this Statement is accurate and complete, Enviro-Mark Solutions Limited (trading as Toitū Envirocare) does not, to the maximum extent permitted by law, give any warranty or guarantee relating to the accuracy or reliability of the information.

ⁱⁱ The mandatory sources that must be included in any Carbon Reduce Programme inventory include:

- All direct emissions from the activities of the organisation, or the part of the organisation being certified. Direct emissions come from assets owned or controlled by the organisation, such as emissions from fleet vehicles, boilers, generators and HVAC systems.
- All emissions from imported energy (electricity, heat and steam)
- Emissions from business travel and freight paid for by the organisation
- Emissions associated with waste disposed of by the organisation, as well as the transmission and distribution of electricity, and natural gas

ⁱⁱⁱ All purchased and generated energy emissions are dual reported using both the location-based method and market-based method in the certified Inventory Report and appendices. This summary document presents the information using the location-based method. Note that reductions and any required compensation are assessed using that method. Dual reporting illustrates the role of supplier choice, onsite renewable energy generation and contractual instruments in managing indirect emissions from energy alongside any ongoing energy efficiency and reduction efforts. This dual reporting aligns with ISO 14064-1:2018 and the GHG Protocol. Please contact this organisation for the dual reporting details applicable to this inventory.

^{iv} Control: the organisation accounts for all GHG emissions and/or removals from facilities over which it has financial or operational control. Equity share: the organisation accounts for its portion of GHG emissions and/or removals from respective facilities.